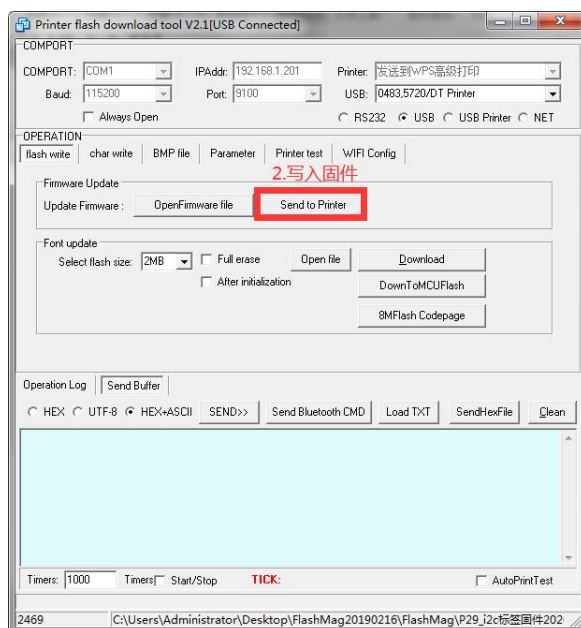
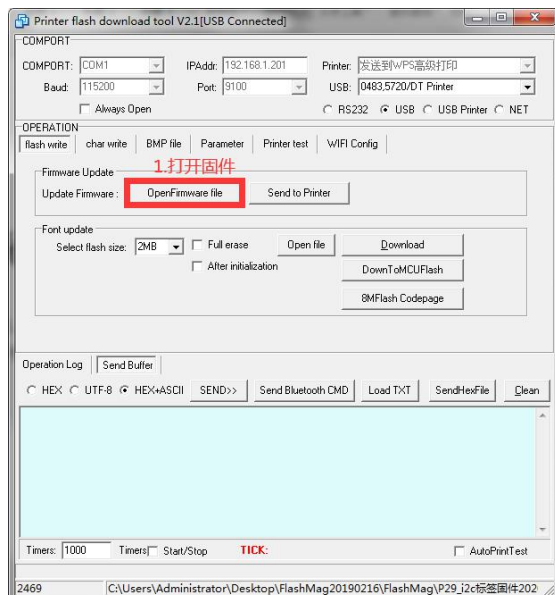


MHT-P80A flash

1. Connect the printer USB cable to the computer and keep it in the off state.
2. First, press and hold the printer's paper output button, and then press and hold the printer's power button. After powering on, immediately let go of the paper eject button.
3. Note: If the operation is successful, there will be no sound when the machine is turned on. If the operation fails, there will be a sound when the machine is turned on.
Failed to re-operate
4. Operate the flashing tool
5. Flashing tool



Printer flash download tool V2.1[USB Disconnected]

COMPORT

COMPORT: COM2 IPAddr: 192.168.1.201 Printer: MP-POS80 5
Baud: 115200 Port: 9100 USB: 0483.5720/DT Printer
☐ Always Open ☐ RS232 ☒ USB ☐ USB Printer ☐ NET

OPERATION

flash write char write BMP file Parameter Printer test WIFI Config

COM Baud: 115200 Char Mode: ASCII+GBK Read Download
Auto shutdown: 0 Device Name: Init syspat License
Step value: 0 PIN Code: 1234
Paper Feed: 200 Serial No: 18110342 ☒ Increment
Blackness: normal System No: 160320001
CRLF: <CR/LF> D_Key: Encrypt mode
Bluetooth: 2.0 E_Key: TEST
Paper Detect: OFF Write FS: L->R

Operation Log Send Buffer

☒ HEX ☐ UTF-8 ☐ HEX+ASCII SEND>> Send Bluetooth CMD Load TXT SendHexFile Clean

add the code of receipt or label

Timers: 1000 Timers Start/Stop TICK: AutoPrint test